

# MONTHLY MEMBERSHIP PROGRESS REPORT

LOCATION WASHINGTON

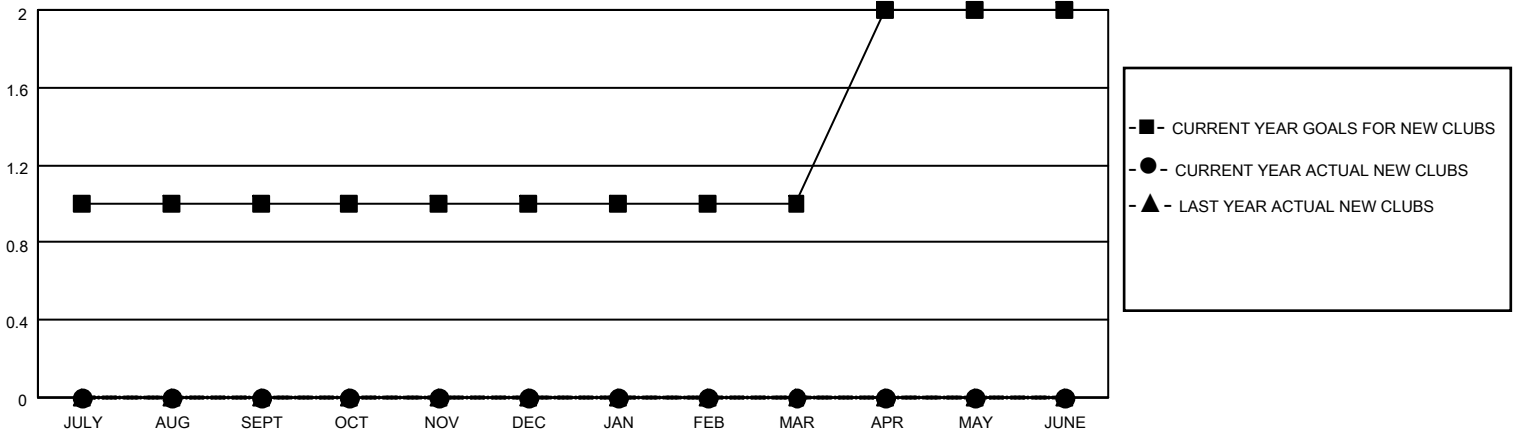
District 19 G

Results as of: 3/31/2021

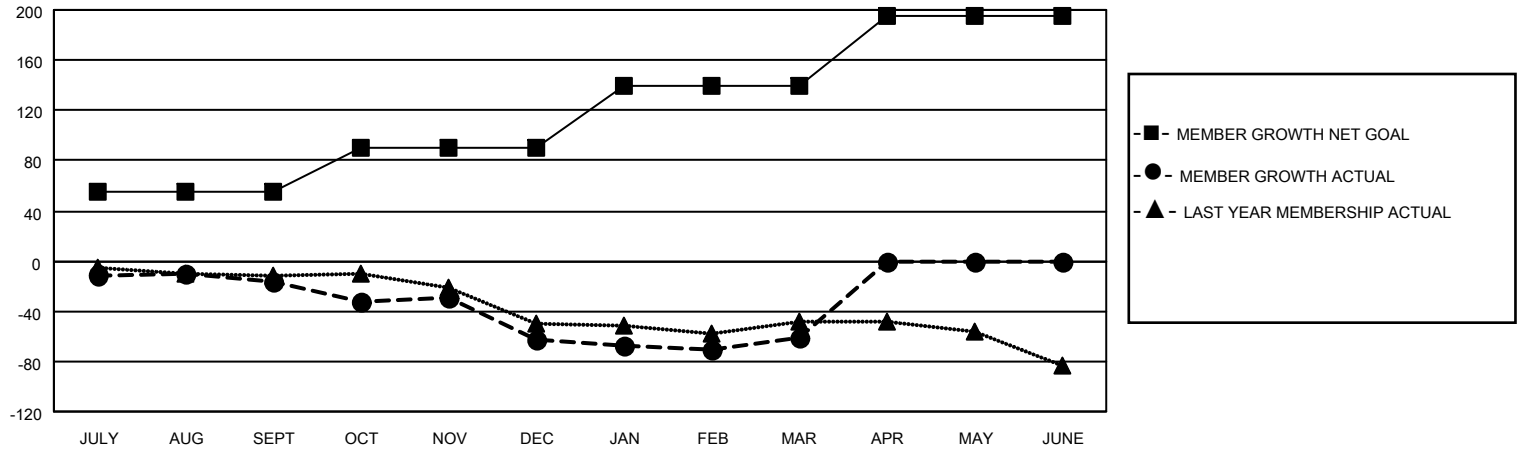
Clubs			
RESULTS FOR 2020-2021			
QUARTER	NEW CLUB GOAL	NEW CLUBS	DROPPED CLUBS
JULY/AUG/SEPT	1	0	0
OCT/NOV/DEC	0	0	0
JAN/FEB/MAR	0	0	0
APR/MAY/JUNE	1	0	0

Members			
RESULTS FOR 2020-2021			
QUARTER	MEMBER GROWTH NET GOAL	MEMBER GROWTH ACTUAL	DROPPED MEMBERS ACTUAL (including transfers)
JULY/AUG/SEPT	55	32	40
OCT/NOV/DEC	35	16	60
JAN/FEB/MAR	50	23	20
APR/MAY/JUNE	55	0	0

**GOALS AND ACTUAL NEW CLUBS CUMULATIVE**



**GOALS AND ACTUAL MEMBERS CUMULATIVE**



DROPPED CLUBS: 0	17 CLUBS OF 39 ADDED 1 OR MORE NEW MEMBERS	<u>GENDER DISTRIBUTION</u> MALE 732 (62.03%) FEMALE 448 (37.97%)
<u>DROPPED MEMBERS</u> DECEASED 14 CLUB CANCELLED 0 OTHER 106 TOTAL 120	<a href="#">CLICK HERE FOR CUMULATIVE MEMBERSHIP DATA</a>	TOTAL FAMILY UNIT MEMBERS 329 FAMILY MEMBERS PAYING HALF DUES 169